
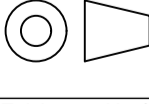
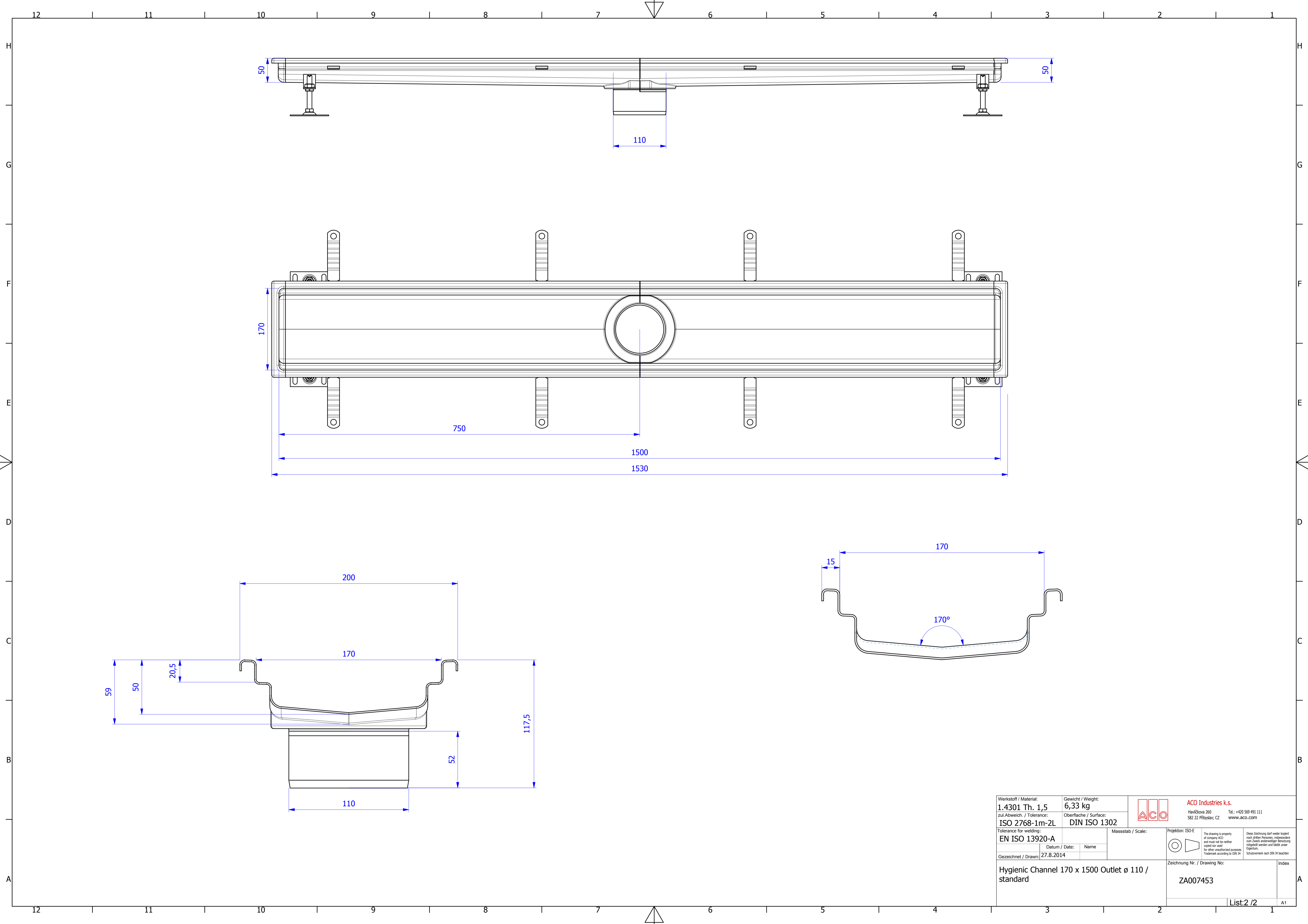

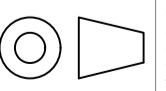


For dimensions, please refer to the next sheet

Channel	
Parameter	(mm)
Width (mm)	200 / 170
Length (mm)	1530/1500
Height at left end H1 (mm)	50
Height at right end H3 (mm)	50
Height at outlet H2 (mm)	59
Outlet diameter (mm)	110

Werkstoff / Material: 1.4301 Th. 1,5	Gewicht / Weight: 6,33 kg	 <b>ACO Industries k.s.</b> Havlíčkova 260 582 22 Pílský, CZ Tel.: +420 569 491 111 www.aco.com
zul. Abweich. / Tolerance: ISO 2768-1m-2L	Oberfläche / Surface: DIN ISO 1302	
Tolerance for welding: EN ISO 13920-A	Datum / Date: 27.8.2014	Projektion: ISO-E 
Gezeichnet / Drawn: 		Zeichnung Nr. / Drawing No: ZA007453
Hygienic Channel 170 x 1500 Outlet ø 110 / standard		Index: List: 1 / 2



Werkstoff / Material: <b>1.4301 Th. 1,5</b>		Gewicht / Weight: <b>6,33 kg</b>		 <b>ACO Industries k.s.</b> Havlíčkova 260 582 22 Píbylary, CZ Tel.: +420 569 491 111 www.aco.com
zul. Abweich. / Tolerance: <b>ISO 2768-1m-2L</b>		Oberfläche / Surface: <b>DIN ISO 1302</b>		
Tolerance for welding: <b>EN ISO 13920-A</b>		Datum / Date: 27.8.2014		Projektion: ISO-E  <small>The drawing is property of company ACO and must not be neither copied nor used for other unauthorised purposes. Trademark according to DIN 34</small>
Gezeichnet / Drawn:		Name:		
<b>Hygienic Channel 170 x 1500 Outlet ø 110 / standard</b>				Zeichnung Nr. / Drawing No: <b>ZA007453</b>
				Index: <b>List:2 /2</b>

A